

The Greenline EM5000

## POST HOLE DIGGER

Our most economical digger backed by 25 years of experience

- Boom & U-Frame - 2 7/8" diameter pipe.
- Augers constructed of sturdy 1/4" flighting. Replaceable serrated edges on 9" & 12" augers only. Spiral drill tip on 6", 9" & 12" augers.
- Fits 3-point Category I linkage. Category II requires bushings.
- Durable commercial gear box with tapered roller bearings and precision gears.
- Shielded drive shaft with automotive type u-joint and quick disconnect.
- Limited warranty: 1 year on unit, 5 years on gear box.
- All post hole diggers are shipped standard with safety shields mounted to gear boxes.
- Options include: positioning handle, adjustable auger extension.

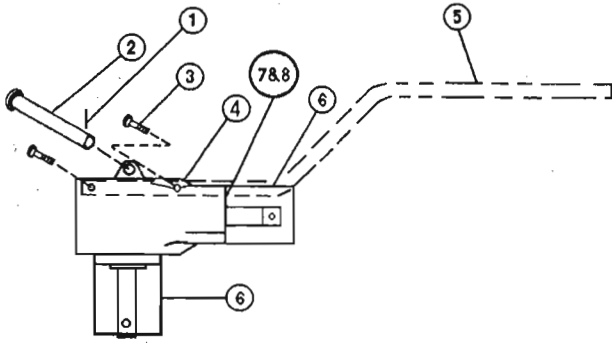
Green Manufacturing  
Division of Benko Products Inc.  
13230 Bishop Road  
Bowling Green, OH 43402  
Ph: 419-352-0100 Fax: 419-352-0123



Printed in U.S.A.

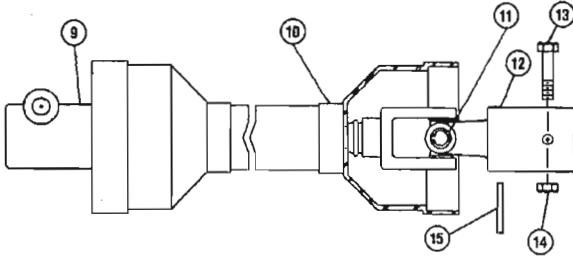
Available with 6", 9", and 12" augers.  
Depth to 42"

# GEAR BOX & MOUNTING PIN



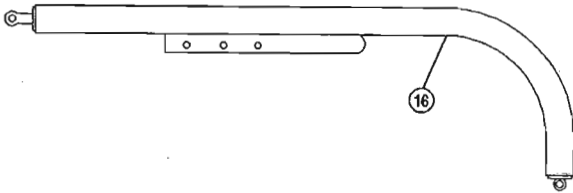
ITEM	PART #	NAME	SIZE	# REQ'D
*1	37-5949	COTTER PIN	1/8 X 2	1
*2	37-5790	CLEVIS PIN	3/4 X 6	1
3	25-5809	BOLT (optional)	3/8 x 1 1/2	2
4	40-5793-1	GEAR BOX		1
5	40-5795	POSITIONING HANDLE (optional)		1
6	24-5935	SAFETY SHIELD		2
7	25-7069	BOLT	M-8 X 12MM	4
8	26-5270	LOCK WASHER	5/16	4

# POWER TAKE OFF



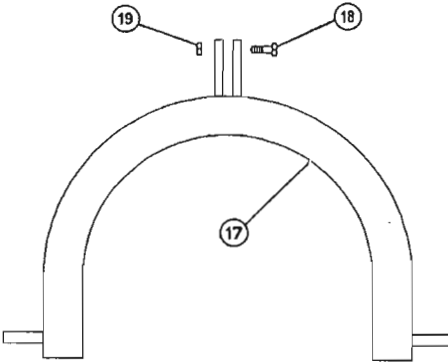
ITEM	PART #	NAME	SIZE	# REQ'D
9	34-6016	YOKE (tractor end)		1
10	34-5794	PTO SHAFT ASSEMBLY		1
11	34-6018	CROSS JOURNAL ASSEMBLY		2
12	34-6017	YOKE (gear box end)		1
*13	25-5797	SHEAR BOLT (grade 2)	5/16 x 2 1/2	1
*14	36-5887	LOCKNUT	5/16 - 18	1
*15	37-1732	ROLL PIN	3/16 x 1 1/2	1

# BOOM ASSEMBLY



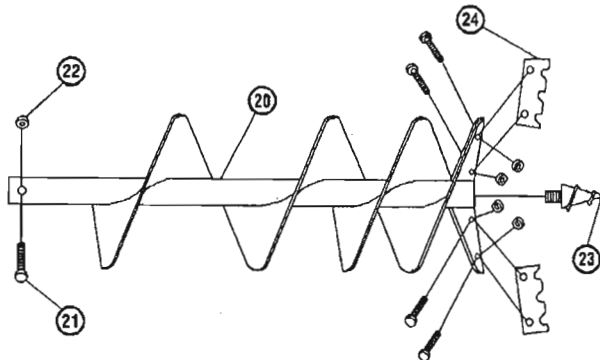
ITEM	PART #	NAME	SIZE	# REQ'D
16	40-5871	BOOM ASSEMBLY	2 7/8 PIPE	1

# U-FRAME ASSEMBLY



ITEM	PART #	NAME	SIZE	# REQ'D
17	40-5872	U-FRAME ASSEMBLY	2 7/8 PIPE	1
*18	25-5791	BOLT	3/4 X 2 3/4	1
*19	36-5792	LOCKNUT	3/4 - 10	1

# AUGER ASSEMBLY



ITEM	PART #	NAME	SIZE	# REQ'D
20	A5650-6	AUGER ASSEMBLY	6"	1
	A5650-9	AUGER ASSEMBLY	9"	1
	A5650-12	AUGER ASSEMBLY	12"	1
*21	25-4132	MOUNTING BOLT	1/2 X 3 1/2	1
*22	36-8003	FULL HEX NUT	1/2 - 13	1
23	19-10071	AUGER SPIRAL POINT	6", 9" & 12"	1
24	40-5045-6	CUTTING EDGES (weld on)	6"	1
	19-10091	CUTTING EDGE KIT	9"	1
	19-10092	CUTTING EDGE KIT	12"	1

**NOTE:** \*indicates item in parts bag  
Part #40-5832

# EM5000 DIGGER