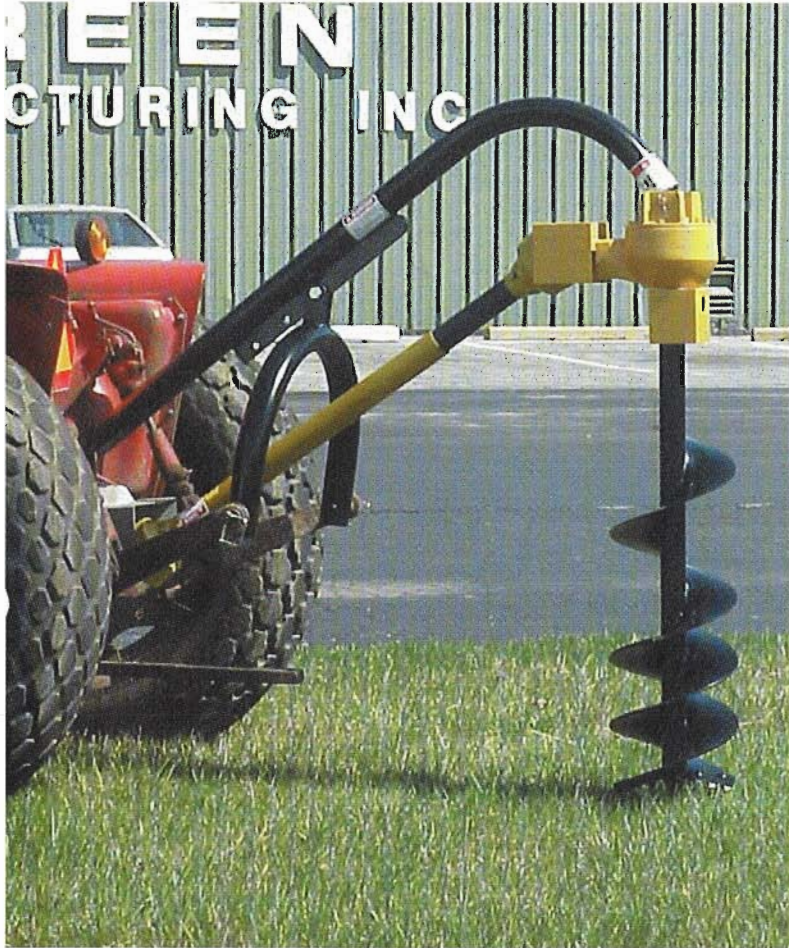


GREENLINE

FM5500 POST HOLE DIGGER



**Available with 6", 9", 12" and 14"
Augers**

- Heavy duty commercial gearbox with 3:1 gear ratio that develops 729 ft. lbs. of torque at 180 rpm.
- Shielded drive shaft with commercial grade cross journals and quick disconnect lock ring design for tractor connection.
- Fits 3-point Category I linkage. Category II requires bushings.
- Boom and U-Frame assemblies are engineered with 2 7/8" diameter structural pipe.
- All post hole diggers are shipped complete with safety shields mounted to gearboxes.
- Augers constructed of sturdy 1/4" flighting. Replaceable serrated edges on 9", 12" and 14" augers. Spiral drill tip in 6", 9", 12" & 14" augers.
- Limited warranty: 1 year on unit, 5 years on gear box.
- Optional adjustable auger extension.



Green Manufacturing Inc.

P.O. Box 408 1032 South Maple Street
Bowling Green, OH 43402

Phone: 419-352-9484 Fax : 419-354-2087

www.green-mfg.com E-Mail: jdauer@green-mfg.com

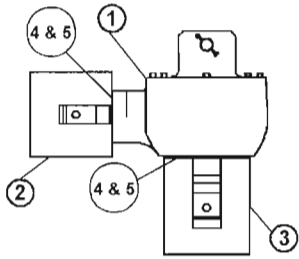


MEMBER

PARTS LIST

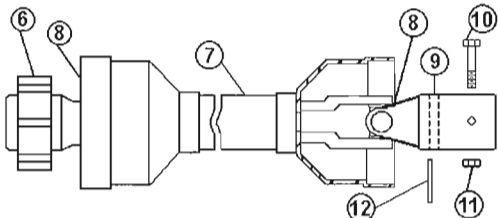
FM5500 DIGGER

GEAR BOX & MOUNTING PIN



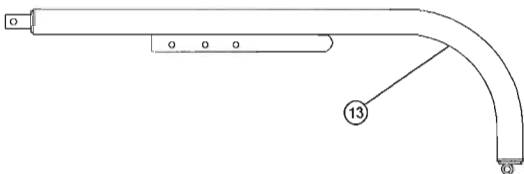
| ITEM | PART # | NAME | SIZE | # REQ'D |
|------|---------|----------------------|------------|---------|
| 1 | 40-6011 | GEAR BOX ASSEMBLY | | 1 |
| 2 | 24-5936 | SAFETY SHIELD INPUT | | 1 |
| 3 | 24-6006 | SAFETY SHIELD OUTPUT | | 1 |
| 4 | 25-4156 | BOLT (grade 5) | 5/16 X 3/4 | 4 |
| 5 | 26-5270 | LOCK WASHER | 5/16 | 4 |

POWER TAKE OFF



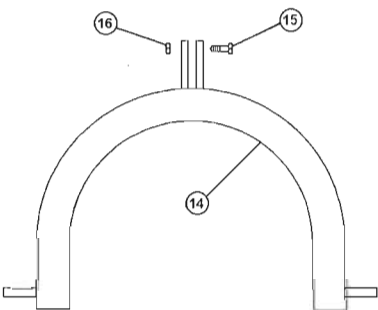
| ITEM | PART # | NAME | SIZE | # |
|------|----------|------------------------|-------------|---|
| 6 | 34-6013 | YOKE (tractor end) | | 1 |
| 7 | 34-6010 | PTO SHAFT ASSEMBLY | | 1 |
| 8 | 34-6015 | CROSS JOURNAL ASSEMBLY | | 2 |
| 9 | 34-6014 | YOKE (gear box end) | | 1 |
| *10 | 25-10135 | SHEAR BOLT (grade 2) | 3/8 x 2 1/2 | 1 |
| *11 | 36-3620 | LOCKNUT | 3/8 - 16 | 1 |
| *12 | 37-5950 | ROLL PIN | 5/16x 1 1/2 | 1 |

BOOM ASSEMBLY



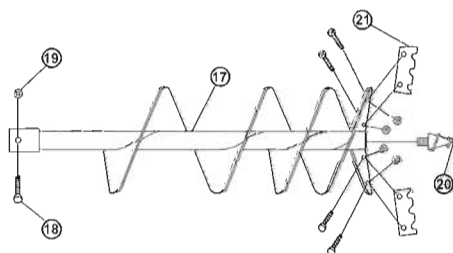
| ITEM | PART # | NAME | SIZE | # |
|------|---------|---------------|------------|---|
| 13 | 40-5871 | BOOM ASSEMBLY | 2 7/8 PIPE | 1 |

U-FRAME ASSEMBLY



| ITEM | PART # | NAME | SIZE | # REQ'D |
|------|---------|------------------|-------------|---------|
| 14 | 40-5872 | U-FRAME ASSEMBLY | 2 7/8 PIPE | 1 |
| *15 | 25-5791 | BOLT | 3/4 X 2 3/4 | 1 |
| *16 | 36-5792 | LOCK NUT | 3/4 - 10 | 1 |

AUGER ASSEMBLY



| ITEM | PART # | NAME | SIZE | # REQ'D |
|------|-----------|-------------------------|-------------------|---------|
| 17 | A 5650-6 | AUGER ASSEMBLY | 6" | 1 |
| | A 5650-9 | AUGER ASSEMBLY | 9" | 1 |
| | A 5650-12 | AUGER ASSEMBLY | 12" | 1 |
| | A 5650-14 | AUGER ASSEMBLY | 14" | 1 |
| *18 | 25-4132 | MOUNTING BOLT | 1/2 X 3 1/2 | 1 |
| *19 | 36-8003 | FULL HEX NUT | 1/2 - 13 | 1 |
| 20 | 19-10071 | SPIRAL POINT TIP | 6", 9", 12" & 14" | 1 |
| 21 | 40-5045-6 | CUTTING EDGES (weld on) | 6" | 1 |
| | 19-10091 | CUTTING EDGE KIT | 9" | 1 |
| | 19-10092 | CUTTING EDGE KIT | 12" | 1 |
| | 40-10068 | CUTTING EDGE KIT | 14" | 1 |

NOTE: * indicates item in parts bag